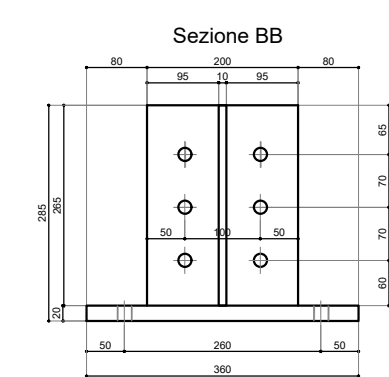
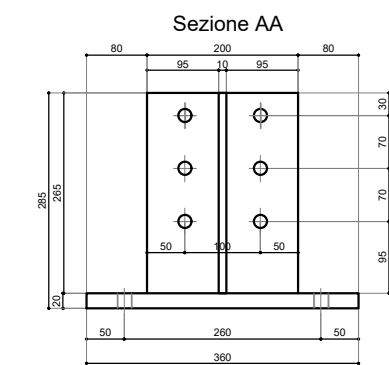
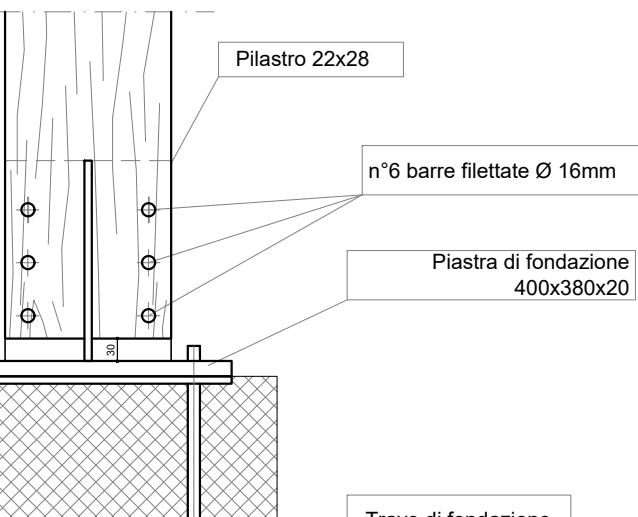


Technical drawing showing a cross-section of a foundation structure. The drawing includes the following components and labels:

- Pilastro 22x28**: Label pointing to the vertical reinforcement bar.
- n°6 barre filettate Ø 16mm**: Label pointing to the horizontal reinforcement bars.
- Piastra di fondazione 400x380x20**: Label pointing to the foundation plate.
- Traliccio di fondazione**: Label pointing to the foundation reinforcement cage.

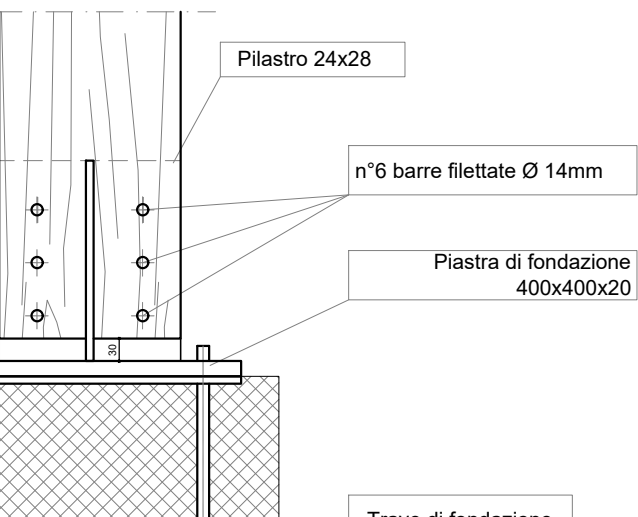
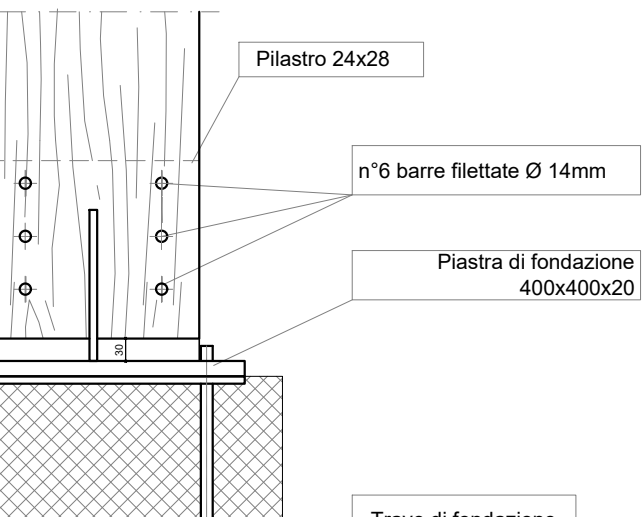
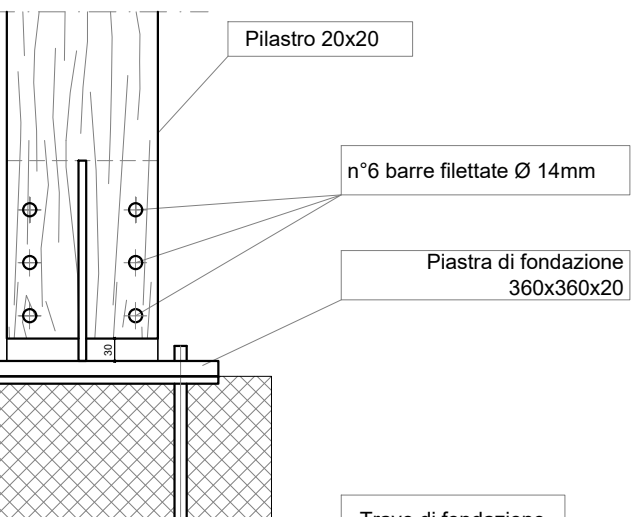
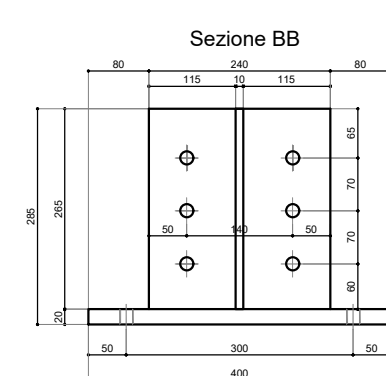
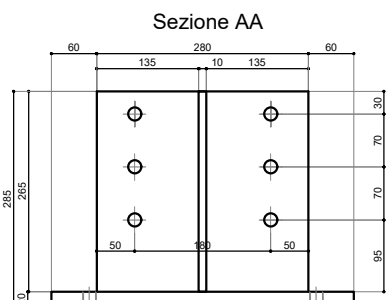


Pilastro 20x20

n°6 barre filettate Ø 14mm

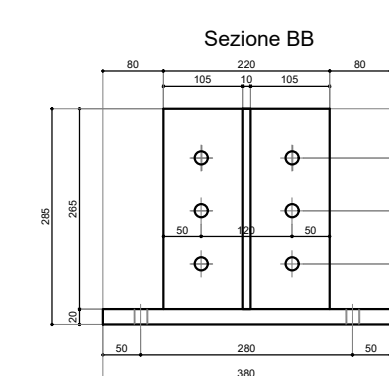
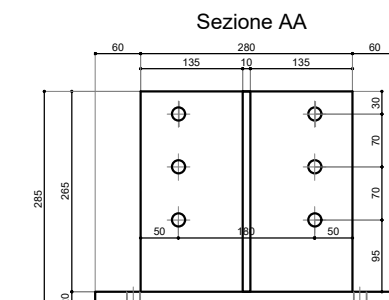
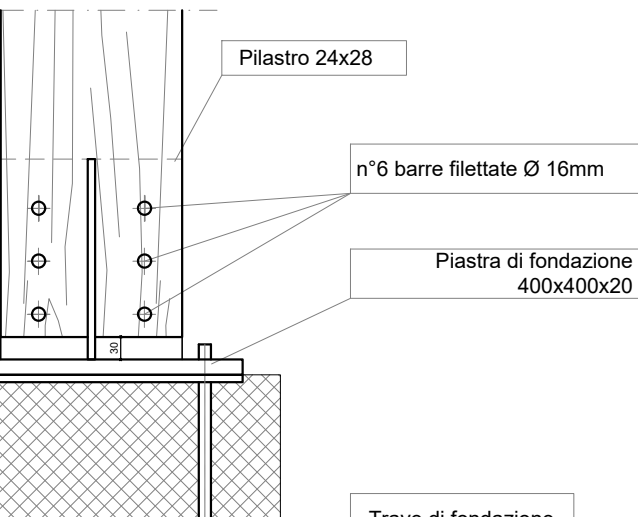
Plastra di fondazione 360x360x20

Fondazione

[illegible]

Technical drawing showing a cross-section of a foundation structure. The drawing includes the following components and labels:

- Pilastro 24x28**: Label pointing to the vertical reinforcement bar.
- n°6 barre filettate Ø 16mm**: Label pointing to the horizontal reinforcement bars.
- Plastra di fondazione 400x400x20**: Label pointing to the foundation slab.
- Tracce di fondazione**: Label pointing to the foundation traces.

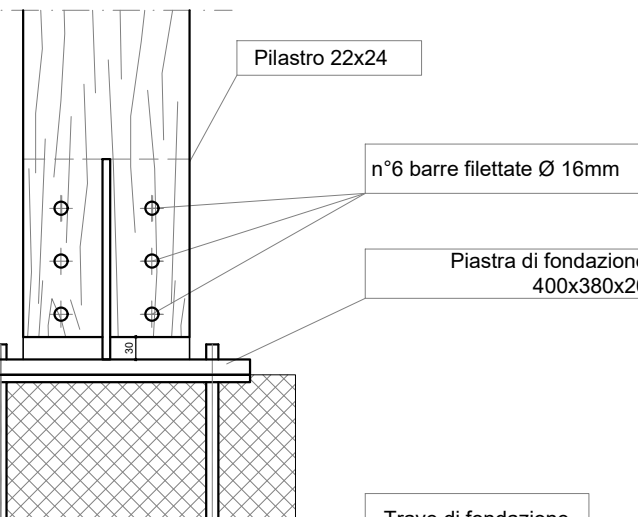


Pilastro 22x24

n°6 barre filettate Ø 16mm

Plastra di fondazione 400x400x20

Tavola di fondazione



Trave 24x60

N° 30 Chiodi Ø 5

Plastra a L tipo TITAN
120x103x200X3

Plastra di appoggio
175x140x5

2 Viti tipo VGZ 7x140

Banchina 20x24

Trave 24x60

2 V8I tipo VGZ 7x140

Piastra di appoggio
+ contropiastra
175x140x5

Bando

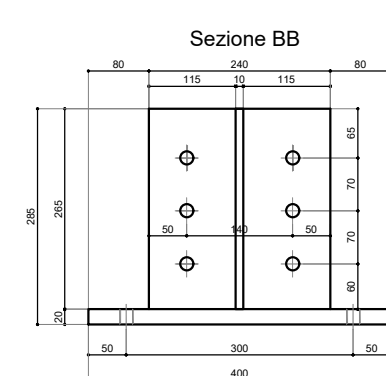
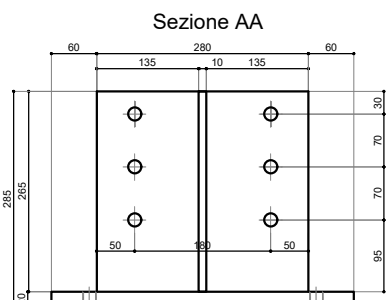
Plastra a L. tipo TITAN
120x103x200X3

2 Viti tipo V/GZ 7x140

china 20x24

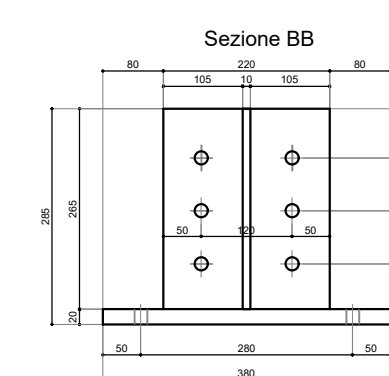
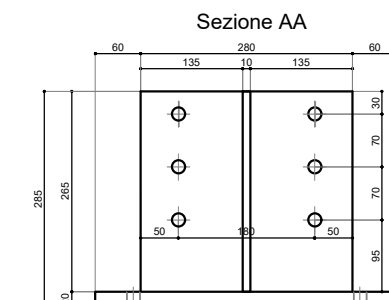
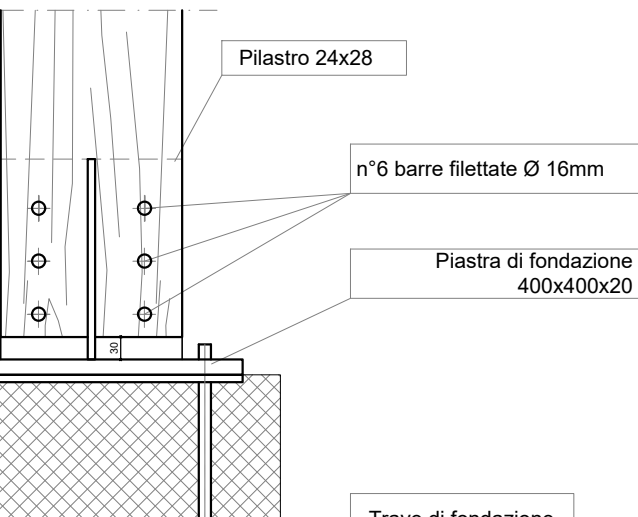
PIASTRA

The diagram shows a square plate with overall dimensions of 80 mm by 80 mm. The central hole has a diameter of 60 mm. There are four smaller circular holes, each with a diameter of 12 mm, located at the corners. The distance from the center of the plate to the center of each corner hole is 240 mm. The distance between the centers of opposite corner holes is 480 mm. The distance from the outer edge of the plate to the center of each corner hole is 40 mm. The thickness of the plate is indicated as 10 mm.



Technical drawing showing a cross-section of a foundation structure. The drawing includes the following components and labels:

- Pilastro 24x28**: Label pointing to the vertical reinforcement bar.
- n°6 barre filettate Ø 16mm**: Label pointing to the six vertical reinforcement bars.
- Plastra di fondazione 400x400x20**: Label pointing to the foundation slab.
- Tracce di fondazione**: Label pointing to the foundation traces.

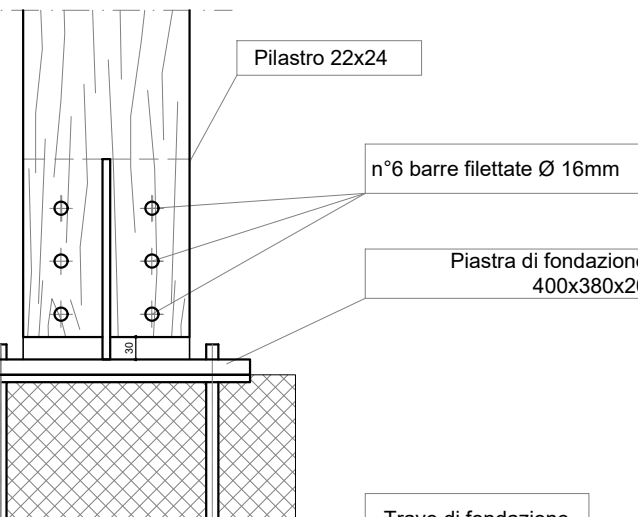


Pilastro 22x24

n°6 barre filettate Ø 16mm

Plastra di fondazione 400x400x20

Tavola di fondazione



SEZIONE AA

Trave 20x40

Alfa tipo ALU MIDI 360L

n° 70 vetri da legno tipo LBS 5x50

n° 9 spinotti lisci 2x160 (52x35JR)

Trave 24x60